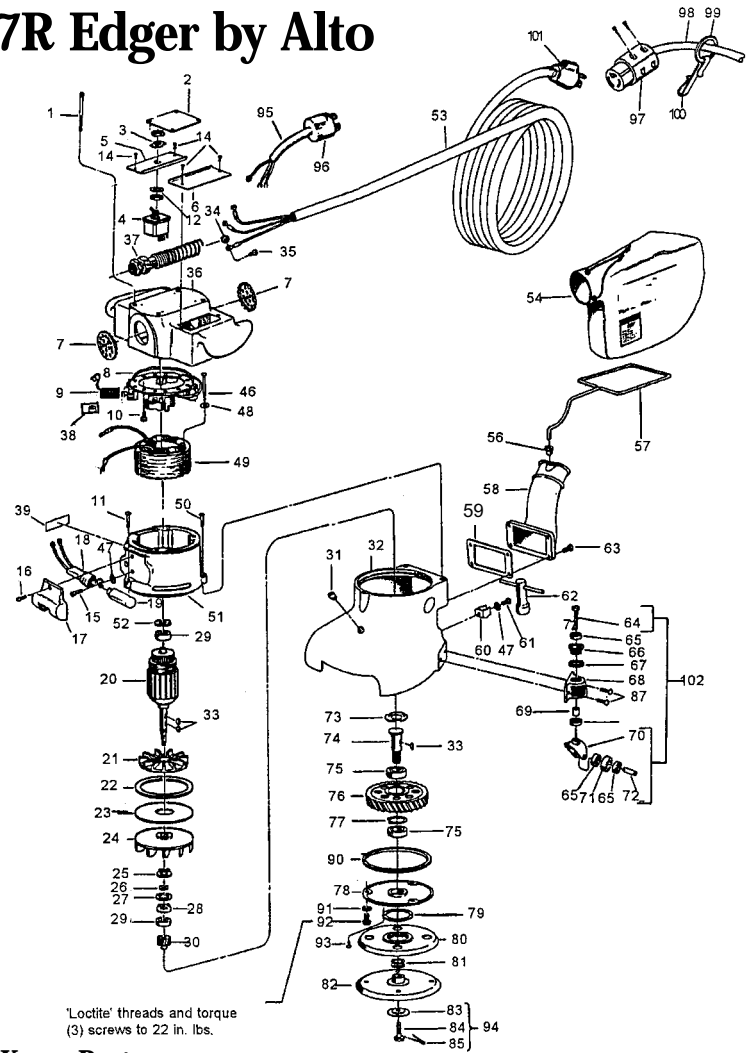


# Clarke Super 7R Edger by Alto

**Model Numbers**  
7075A



\*Loctite® threads and torque  
(3) screws to 22 in. lbs.

Key No.	Part No.	Description
1	962404	Screw - #10 - 24 x 3-1/4 Ft. St. Mach. (qty. 4)
2	70054A	Plate - Name
3	646302	Plate - Dial
4	47394A	Switch - Toggle
5	302310	Cover, Motor Brush R.H.
6	302309	Cover, Motor Brush L.H.
7	306802	Plug - Vent (qty. 2)
8	43201A	Holder Assembly Brush
9	40818A	Brush (qty. 4)
10	962727	Screw - #8 - 32 x 1/2 Pan Head (qty. 4)
11	962988	Screw 1/4 - 20 x 1-1/4 Pan St. Mach.
12	980662	Washer - SH #1224-00 Lock
14	962545	Screw #6-32 x 3/8 Ft. St. Type 23 (qty. 4)
15	85393A	Screw #10 - 24 x 1/4 Pan St. Mach.
16	962310	Screw - #10 - 24 x 1/2 OV
17	303602	Guard - Lamp
18	46902A	Socket - Assembly
19	911113	Bulb - Light 15W Clear
20	10101B	Armature Assembly w/fan
21	303004	Fan - Motor
22	293403	Gasket - Fan Baffle
23	306102	Plate - Exhaust Fan Baffle
24	303002	Fan - Vacuum
25	307302	Ring - Retaining
26	308202	Spacer - Bearing
27	297604	Seal - Oil
28	407302	Ring - Retaining
29	902567	Bearing (qty. 2)
30	293514	Pinion - Armature
31	316804	Plug - Pipe 1/8
32	304204	Housing - Gear
33	915028	Key 1/8 x 5/8 Woodruff (qty. 3)
34	980621	Washer, #1108
35	962550	Screw, 8 - 32 x 5/16
36	302312	Cover - Handle Assembly Polish
37	467504	Strain Relief
38	50932A	Spring Brush Holder (qty. 4)
39	73285A	Label, Warning
46	962211	Screw 10 - 24 x 2-1/2 Pn. St. Mach. (qty. 2)
47	980603	Washer - #1110 Shakeproof (qty. 7)
48	980643	Washer - #10 7/16 Plain
49	42820A	Field Assembly
50	962454	Screw 1/4 - 20 x 1 Sc. Cap (qty. 2)
51	304208	Housing and Guard Assembly
	20013A	Housing, Motor Super 7R
52	298306	Spring Load
53	42018A	Cord Assembly, 115V
54	50952A	Bag, Dust
56	50732A	Bearing
57	69621A	Support, Bag
58	21108A	Bracket - Exhaust
59	293406	Gasket - Exhaust Bracket
60	302101	Clamp - Wrench
61	962987	Screw - 10 - 24 x 3/8 Pn. St. Typ.
62	987300	Wrench
63	962289	Screw 1/4 - 20 x 3/4 Soc. St. Cap (qty. 4)
64	85702A	Screw - 1/4 - 20 x 1-3/4
65	50740A	Bearing (qty. 8)
66	960130	Screw - Caster Adjusting (qty. 2)
67	920670	Nut - Lock Adjust (qty. 2)
68	310803	Bracket - Caster Support (qty. 2)
69	298215	Spacer - Collar (qty. 2)
70	29404A	Yoke, Edger, Caster (qty. 2)
71	299704	Roller - Caster
72	925592	Pin - 1/4 x 1 Spirol (qty. 2)

Key No.	Part No.	Description
73	318303	Spring - Load
74	307702	Shaft - Drive Gear
75	902550	Bearing (qty. 2)
76	303502	Gear - Drive
77	067304	Ring - Retaining
78	302306	Cover - Assembly Gear Housing
79	317204	Retainer - Disc Guard
80	293616	Guard - Disc
81	980088	Washer (qty. 2)
82	13203A	Assembly - Sanding Pad
83	980132	Washer - Disc, Retaining
84	960140	Screw - Paper Lock
85	925004	Pin - Cotter 1/16 x 1/2
87	962109	Screw - #10 - 24 x 5/8 Pn SS (qty. 4)
90	34232A	Gasket - Gear Case Cover (qty. 4)
91	87609A	Washer Seal (qty. 3)
92	84808A	Screw, 10 - 24 x 3/4 (qty. 3)
93	962974	Screw, 6 - 32 x 1/2 (qty. 4)
94	960125	Assembly Screw Lock
95	41947A	Cord Interconnect 240V
96	45602A	Plug 240V
97	41708A	Connector 240V
98	42182A	Cord Assembly Power 240V
	40007A	Cordset, 50' w/AU1-10P
99	57809A	Ring
100	54812A	Hook
101	911248	Plug 115V
102	12208A	Caster Assembly (qty. 2)
*	31407A	Case, Super 7R Edger

\*Not illustrated

Clarke Edger

**PHP**